



6

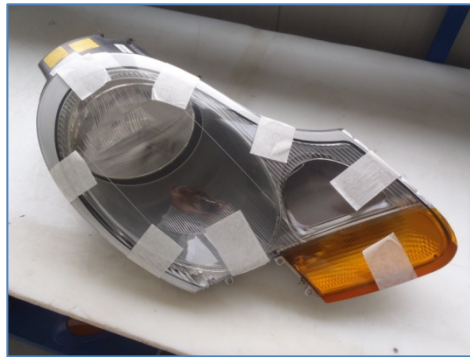
CHANGE INTERNAL LENS

LENS CHANGING INSTRUCTIONS



7

INSERT THE INNER MASK



8

AFTER CLEANING THE BODY BY THE OLD SYLICON, PUT THE NEW SYLICON ALL AROUND THE BODY AND FIX THE EXTERNAL LENS WITH ADHESIVE PAPER TAPE. LEAVE THE LAMP IN THIS CONDITION FOR THREE DAYS.





1

PUT IN THE OVEN AT 80°C/
180°F FOR 4/5 HOURS



2

MAKE LEVER ALL
AROUND



3

REMOVE THE LENS



4

REMOVE SCREWS



5

REMOVE INNER MASK